



# doltone house

DARLING ISLAND WHARF | PYRMONT

## THE PARKVIEW

DARLING ISLAND WHARF

### DISCOVER

The most contemporary of business facilities in a relaxed setting, The Parkview room sits opposite Metcalf Park, Darling Island Wharf. Our venue takes inspiration from the advances and ethos of our 6 star green star building. Natural light fills three of our meeting rooms accommodating 10 – 200 guests, equipped to the highest standards and managed by and experienced events team. All rooms are air conditioned and offer conference organisers and delegates the ideal venue for company training, product launches, incentives or meeting facilities.

### DAZZLING SPACE

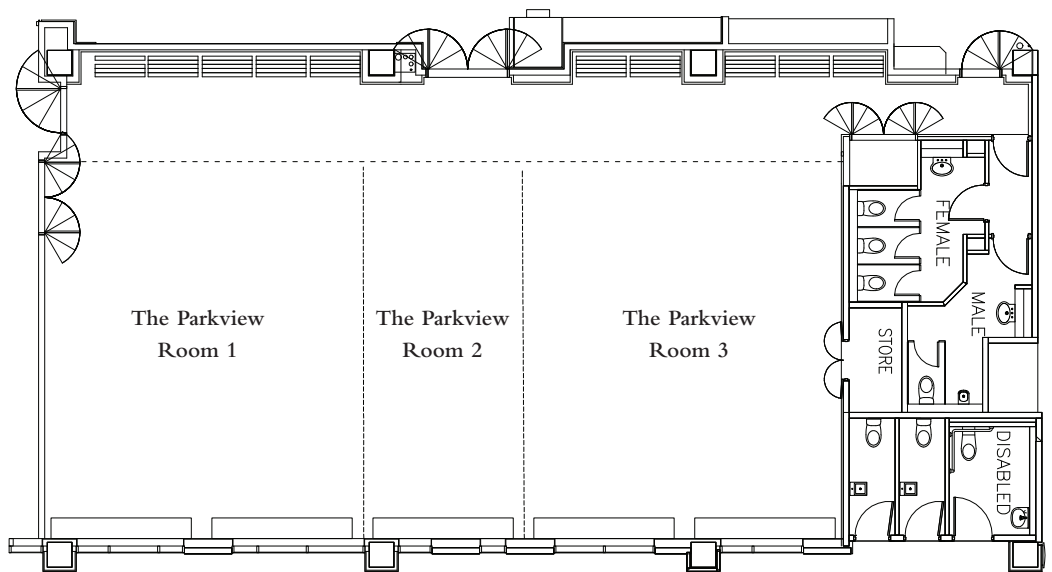
- Housed within the first 6 Star Green Star Building in NSW
- Fit-out embraces the same green design
- Fully carpeted contemporary event space
- Black out facilities
- Sophisticated lighting, AV, internet and staging infrastructure
- Culmination of elegant design and social responsibility
- Disabled access
- Portable black & white dance floor
- Acoustic operable walls segment the area
- Fully-air conditioned

### DISTINCT EVENTS

- Cocktail functions
- Formal dinners
- Product launches
- Exclusive luncheons
- Corporate conference and seminars
- Annual general meetings
- Special events
- Mid year functions
- End of year celebrations
- Social Club parties
- School formals

### DETAILS

Darling Island Wharf (opp Star City)  
Ground Floor Accenture Building,  
48 Pirrama Road, Pyrmont 2009  
P: 02 8571 0600  
E: [info@doltonehouse.com.au](mailto:info@doltonehouse.com.au)  
[www.doltonehouse.com.au](http://www.doltonehouse.com.au)



### DIMENSIONS

	Dinner	Dinner   Dance	Cocktail	Theatre	Exhibition	Cabaret
The Parkview	150	120	200	230	15 (3mx2m) Or 11 (3mx3m)	120