

# JONES BAY WHARF

## Piermont Boardroom



### DISCOVER

Business is always a pleasure when conducted at Doltone House. Our magnificently appointed boardroom is designed as the ultimate place for conducting executive meetings. It is vibrant and creative with an abundance of natural light and an amazing outdoor deck overlooking the Sydney Harbour. Equipped with the latest audio-visual technology, black out facilities and accommodating up to 12 guests, this stylish and contemporary business environment is the ideal venue for impressing clients and closing deals.

### DAZZLING SPACE

- Waterfront location
- Private deck area
- Lift and disable access
- Fully air-conditioned
- Custom designed boardroom table
- Leather furnishings
- Modern professional setting
- Natural light
- Polished timber floors
- Views of city skyline
- Plasma screen
- Internet access
- Telephone lines

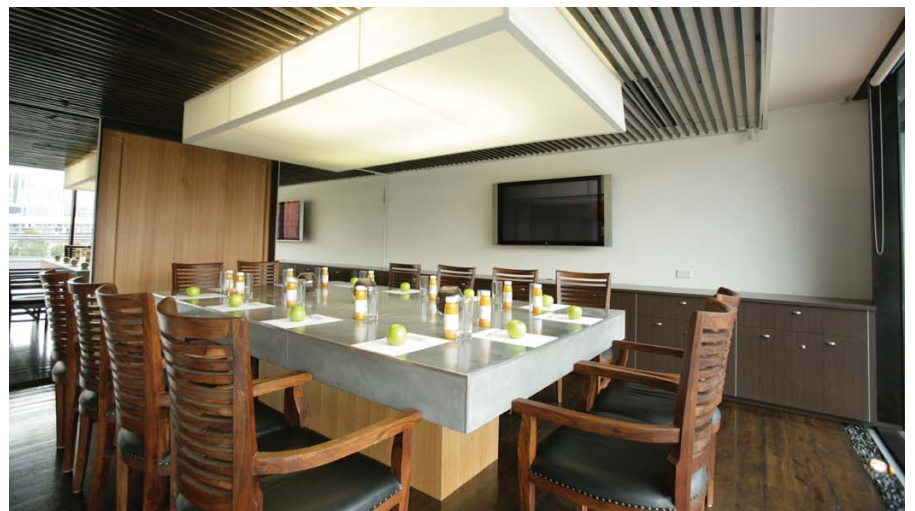


**doltone house**

JONES BAY WHARF | PYRMONT

### DETAILS

Jones Bay Wharf  
Piers 19-21, Upper Deck,  
26-32 Pirrama Road, Pyrmont 2009  
P: 02 8571 0622  
E: [info@doltonehouse.com.au](mailto:info@doltonehouse.com.au)  
[www.doltonehouse.com.au](http://www.doltonehouse.com.au)

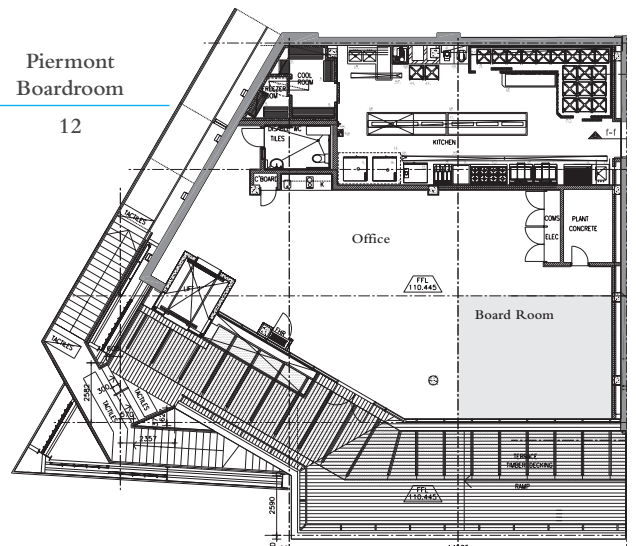


### DIMENSIONS

Boardroom

Piermont  
Boardroom

12





**doltone house**

JONES BAY WHARF | PYRMONT

A beautiful sydney  
harbour venue

Piers 19-21 Upper Deck  
26-32 Pirrama Road, Pyrmont NSW 2009

P: +61 2 8571 0622

E: [info@doltonehouse.com.au](mailto:info@doltonehouse.com.au)

**[doltonehouse.com.au](http://doltonehouse.com.au)**



Please consider the environment before printing this document